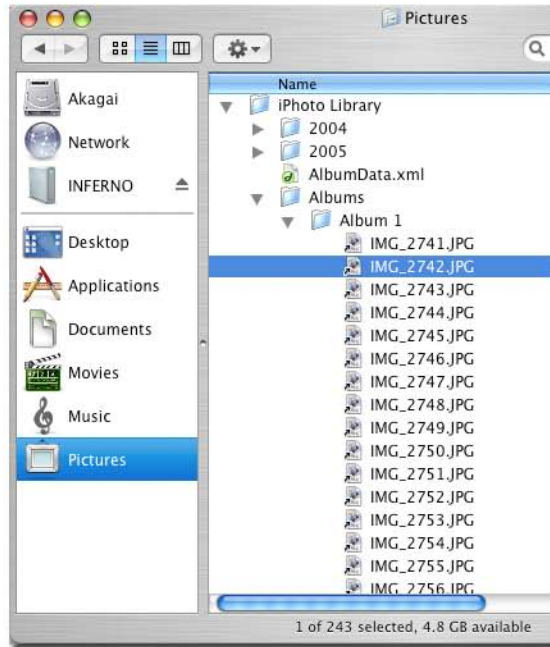


Importing Photos from iPhoto

In order to successfully import images from iPhoto into any of APTE's photo software packages, it's important to understand the file structure iPhoto uses to organize its pictures.

For example: you have a photo (**IMG_2742.JPG**) on your computer that you wish to import into an APTE program. Instinctively you navigate to your '**Pictures**' folder to find the album and the photo you wish to import. You see the photo and select it. But the import fails! Why? Because you are trying to import an alias image. This is not a real photo, but a placeholder of the original photo. In order to successfully import **IMG_2742.JPG** into APTE's photo software you need to know where iPhoto stores your original photos.

The easiest way to recognize an alias is by the little black arrow in the bottom left corner of the file icon.



Where can I find the original to the alias?

iPhoto stores the original images in nested folders. Take a close look at the iPhoto Library content. Depending on how long you have been using iPhoto to download images from your digital camera, you'll find folders that are labeled according to years. Within the year folders you'll find folders corresponding to months and within each month there are folders for each day on which you imported the image from your camera into iPhoto.

For our sample image that means, '**IMG_7242.JPG**' which was imported on February 16th, 2005 can be found in folder '**16**' within folder '**2**' which is located in folder '**2005**'.

